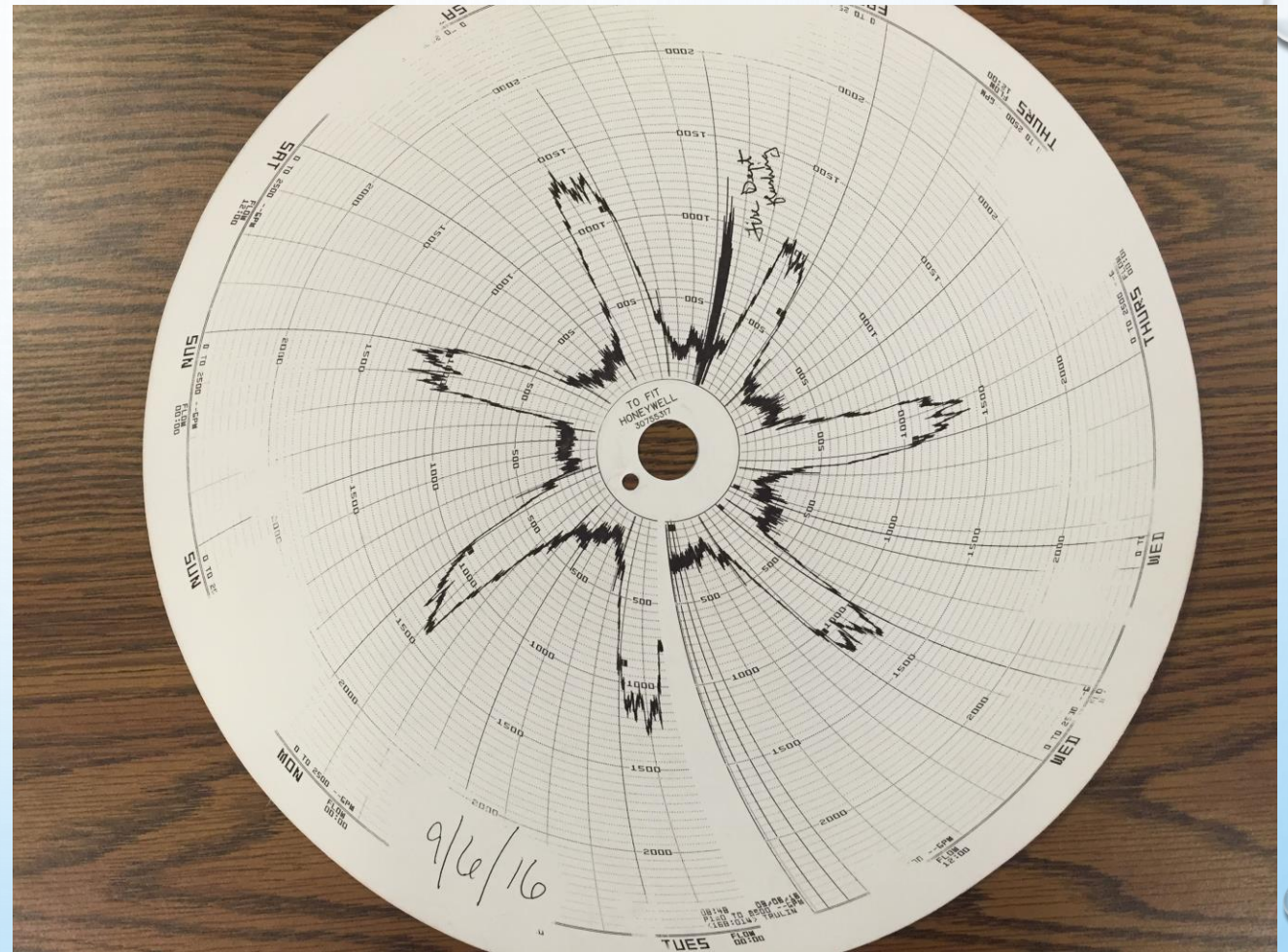


WATER FLOWS

GIWA ALWAYS PUMPS MORE WATER IN THE EVENING DUE TO IRRIGATION SYSTEMS.

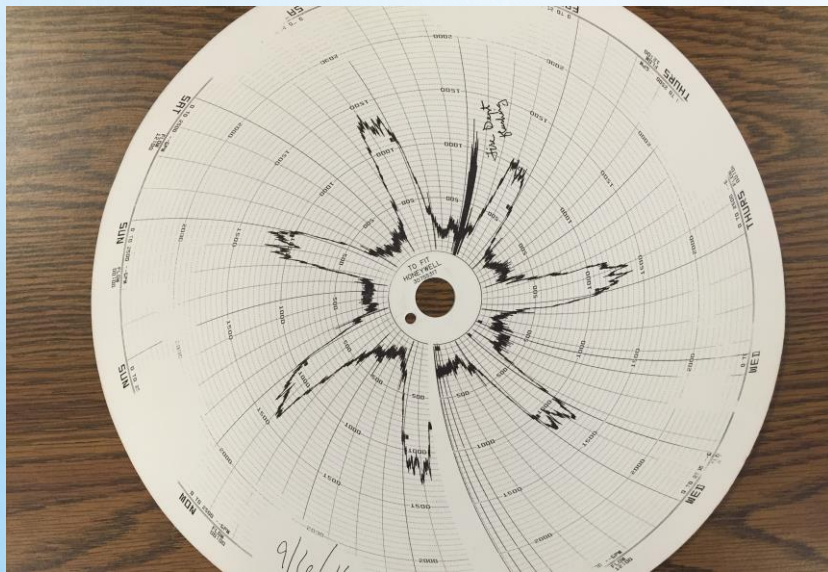
THIS IS UNUSUAL. MOST UTILITIES HAVE HIGHER FLOWS DURING THE DAYTIME HOURS WHEN PEOPLE ARE AWAKE AND BUSINESSES ARE OPEN.

FLOW WILL REACH 1 500 GALLONS PER MINUTE OR SLIGHTLY HIGHER DURING PEAK IRRIGATION TIMES.



ISLAND WATER FLOWS COMPARISON OF RAINY AND VERY DRY PERIODS

9/6/16 IRRIGATION SYSTEMS
RUNNING AFTER ALMOST 8" RAIN



11/22/16 AFTER NO
SIGNIFICANT RAIN FOR 49 DAYS

